

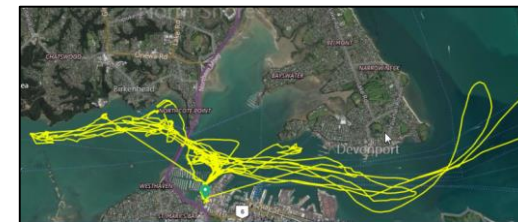
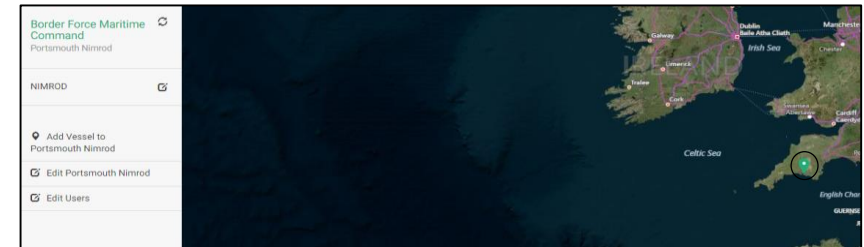
TRACK

Base and GeoFence Guide



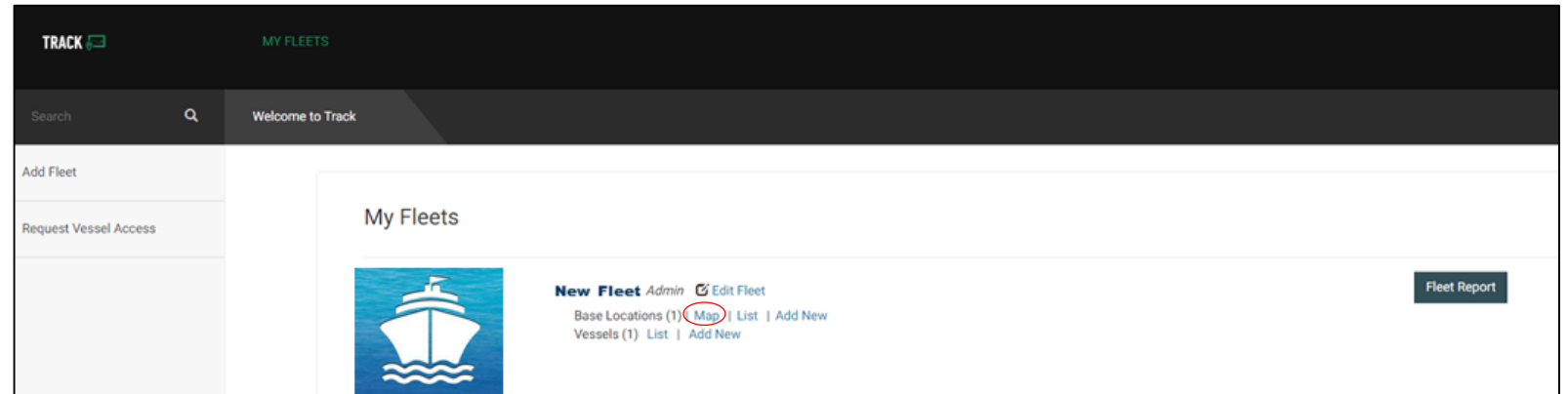
Fleet Management

- Fleet Map:
 - Displays all base locations that vessels are stored in
 - Boat count per base
- Base Map:
 - Displays the location of all vessels in the base.
 - Includes a total count of vessels by base
- Vessel Map and status:
 - Individual vessel detail and status

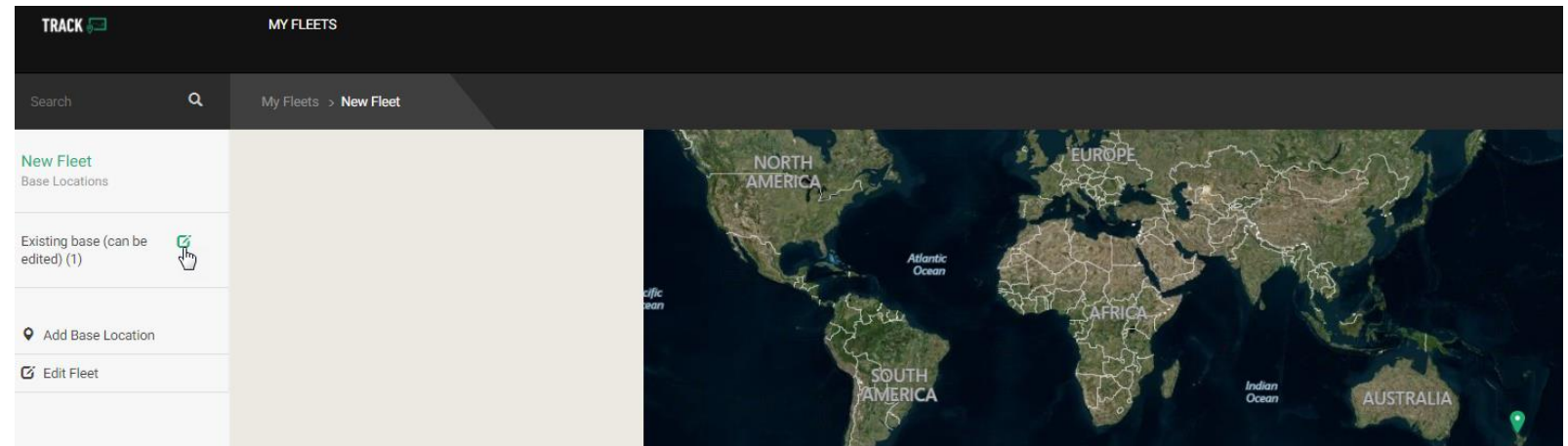


Adding Bases and Geofences

- Select Base locations – Map



- At the Base Map page choose
 - “Edit” icon
 - or
 - “Add Base”



Base Setup

- Zoom the map to the spot and level you like
- Name the Base and set the center of the Base Viewpoint
- Save your new base
 - You do not need to set a Geofence

Base Location

Set center point and add up to two geofences.

My New Base

Set Base Viewport

Save

Sets current map view as base location center.

Geofences

Create geofences to receive alerts when vessels are entering or leaving geofenced areas.

Remember to click "Save" at the top of this window after you are done editing the base location's geofences.

Geofence1

Geofence Name Add

Enable Entry Alerts Enable Exit Alerts

Geofence2

Geofence Name Add

Enable Entry Alerts Enable Exit Alerts

Adding Geofences

Enter your Geofence name and select 'Edit' to draw your geofence

- *A Base must be saved before a Geofence can be drawn

Base Location

Set center point and add up to two geofences.

My New Base 📍 Set Base Viewport Save Delete Base

Geofences

Create geofences to receive alerts when vessels are entering or leaving geofenced areas.
Remember to click "Save" at the top of this window after you are done editing the base location's geofences.

Geofence1: My Geofence Edit
 Enable Entry Alerts Enable Exit Alerts

Geofence2: Geofence Name Edit
 Enable Entry Alerts Enable Exit Alerts

Adding Geofences

1. Click on the Polygon tool
2. Move the cursor onto the map
3. Click once to start drawing
4. Click again for each corner
5. Double click after setting your last corner
6. Click on any dot in the fence to change the shape
7. Click on "Done" – Fence is added
8. Click on Edit to redraw
9. Enable entry and exit Geofence alerts
10. Save

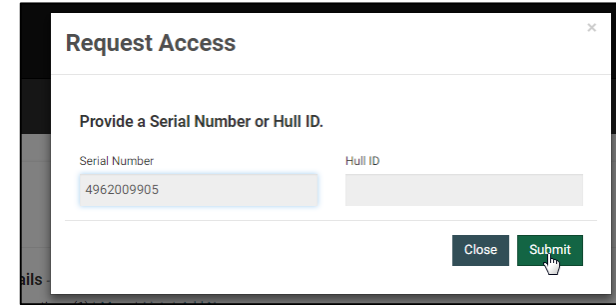
The screenshot displays the 'Base Location' interface. At the top, there is a 'Set center point and add up to two geofences.' section with a text input 'My New Base', a 'Set Base Viewport' button, and 'Save' and 'Delete Base' buttons. Below this is a 'Geofences' section with a text input and a 'Create geofences to receive alerts when vessels are entering or leaving geofenced areas.' instruction. A note says 'Remember to click "Save" at the top of this window after you are done editing the base location's geofences.'

The main map area shows a satellite view of a coastal city with the 'Golfo di Palermo' labeled. A purple polygon tool is active, and a green polygon is being drawn. Numbered callouts 1 through 7 illustrate the steps: 1 (tool icon), 2 (cursor on map), 3 (first click), 4 (second click for corner), 5 (third click for corner), 6 (click on a vertex to edit), and 7 (click on the 'Done' button). Below the map is a toolbar with 'GEOFENCE 1', a cursor icon, 'Done', 'Cancel', and 'Delete Geofence' buttons.

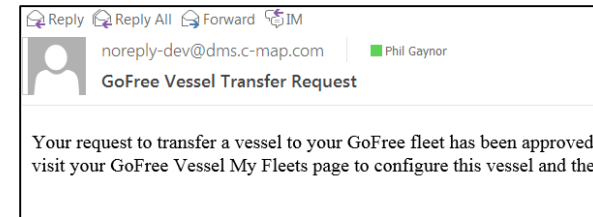
At the bottom, there are two geofence configuration panels. 'Geofence1' has a text input 'My Geofence', an 'Edit' button, and checkboxes for 'Enable Entry Alerts' and 'Enable Exit Alerts'. 'Geofence2' has a text input 'Geofence Name', an 'Edit' button, and the same checkboxes. Numbered callouts 8 and 9 point to the 'Edit' and 'Enable Exit Alerts' options respectively.

Vessel Transfers

- Locations that receive boats can request access or transfer them to their own fleets
- When transfers are complete Fleet admins are advised by instant emails
- Detailed fleet reports are available directly from the site
 - Records all device transfer history



The screenshot shows a 'Request Access' dialog box. It contains a prompt 'Provide a Serial Number or Hull ID.' and two input fields. The 'Serial Number' field contains the value '4962009905'. Below the fields are two buttons: 'Close' and 'Submit'.



My Fleets



Bavaria SD - Admin [Edit Fleet](#)

[Fleet Report](#)

[Base Locations \(2\) | Map | List | Add New](#)
[Vessels \(2\) | List | Add New](#)