

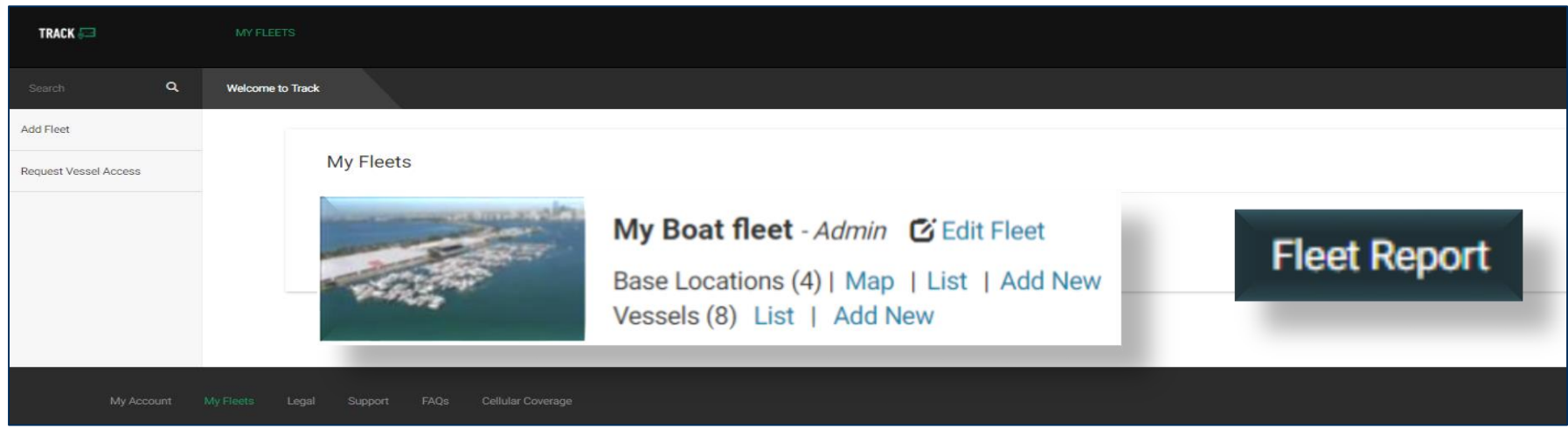
TRACK

Fleet Management

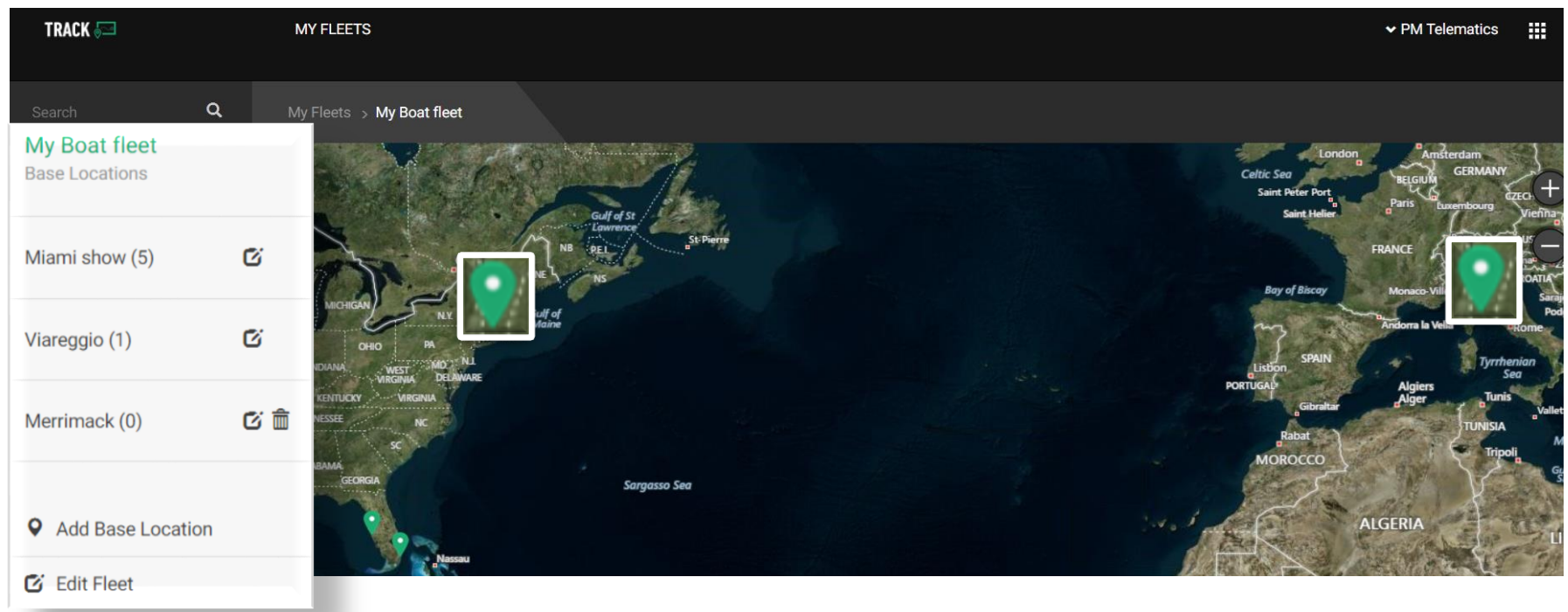


Fleet Management

All vessels are contained within a fleet and a base



Map and list all fleet base locations



*Only bases without vessels can be removed



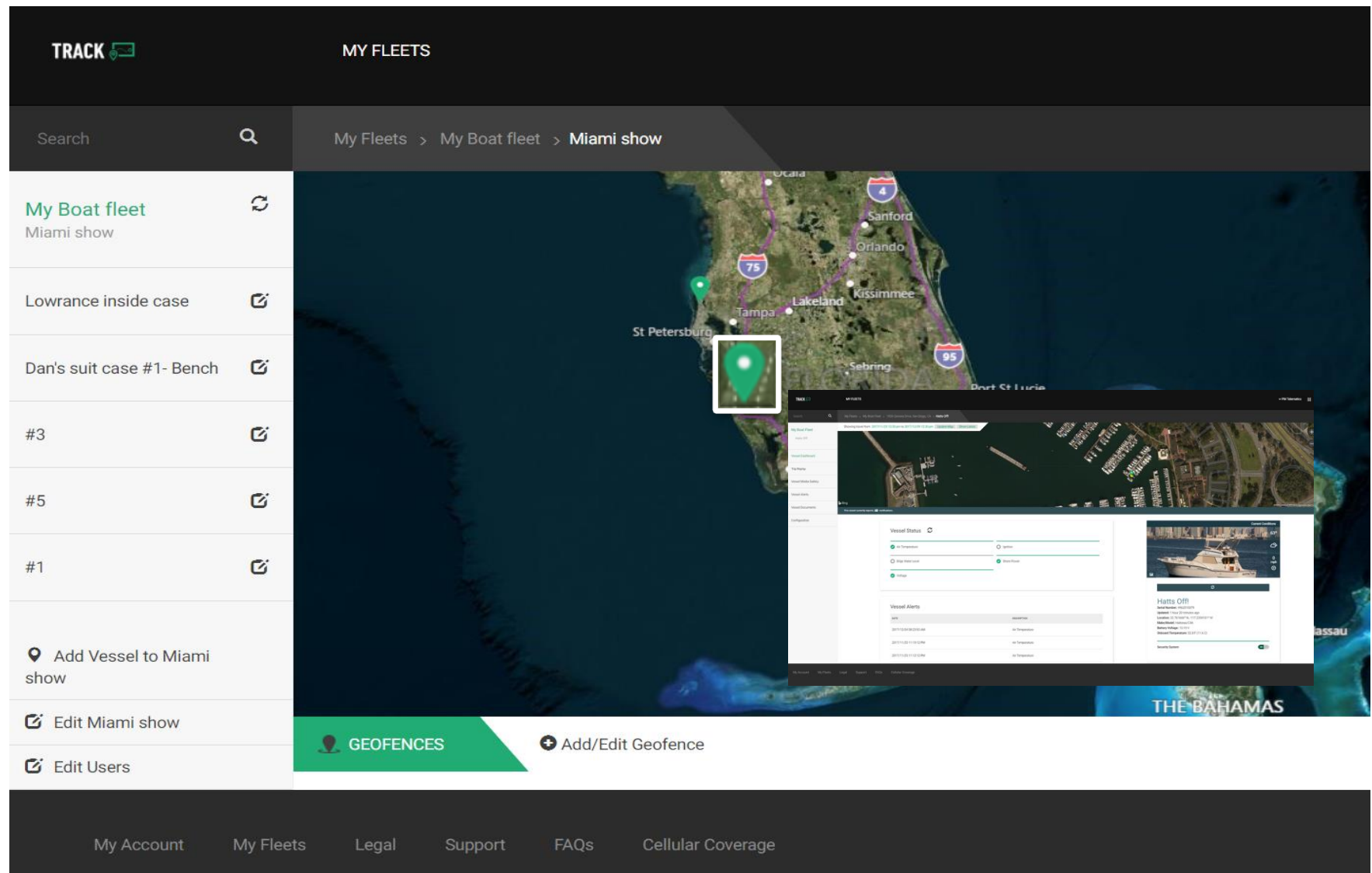
Track - Fleet Management

Map and List of each vessel at a base

Click to vessel Dashboard

Transfer vessels between bases

Add Support users to any base



***Support users have limited capabilities**



Geofences

Name and locate the geofence on the map

Attach up to 2 Geofences to any base

- Click on the polygon tool to start
- Double click after geofence is drawn

The screenshot displays the TRACK MY FLEETS application interface. On the left, a sidebar menu lists various fleet management options, including 'My Boat fleet', 'Lowrance inside case', and 'Add Vessel to Miami show'. The main area shows a satellite map of a coastal region with a green polygon geofence drawn around a building complex. A white tooltip with a plus icon and the text 'Add/Edit Geofence' is overlaid on the map. A dark green banner at the bottom of the map area reads 'Draw a polygon geofence.' Below the map, a 'GEOFENCE 1' dialog box is open, featuring a 'Done' button and a 'Geofence' label. At the bottom of the screen, a 'Base Location' dialog box is visible, containing a search field with 'Arena' entered, a 'Set Base Viewport' button, and a 'Save' button. Below this, there are fields for 'Geofence1' (containing 'Shoal') and 'Geofence2' (containing 'Geofence Name'), each with an 'Add' or 'Edit' button. Checkboxes for 'Enable Entry Alerts' and 'Enable Exit Alerts' are also present for both geofences.

***All vessels in a base use the same geofences**